



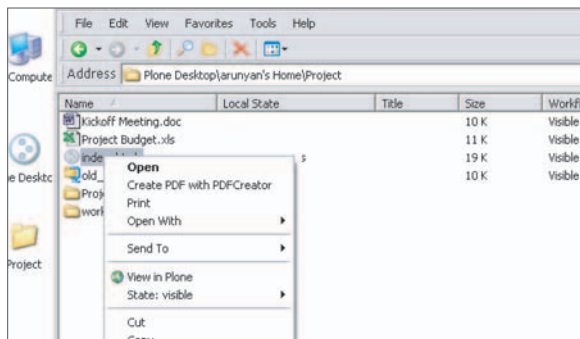
Overview

Most web interfaces are slow and complex. Enfold Desktop enables users to work with Plone in a familiar Windows desktop environment while extending behaviors such as workflow and rich content types.

Supported

Purchase of Enfold Desktop includes 30 days of installation support.

Organizations can purchase extended support on a six month or yearly basis to ensure prompt response to support issues.



→ Visit enfoldsystems.com and view a full demo of Enfold Desktop.

Contents

The following software is contained in the Enfold Desktop package:

- Enfold Desktop client software
- Enfold Desktop components (works on Zope/Plone)

Features

Enfold Desktop creates a Windows Explorer interface into Plone. In your standard desktop environment, you can now add, edit and interact with your Plone server and its content!

- Drag and drop files into Plone through Windows Explorer.
- Cut and paste files into Plone through Windows Explorer.
- Edit files in your local programs (MS Office, Open Office, etc...)
- Lock and unlock documents from Windows Explorer.
- Add any folder to Enfold Desktop via browser integration.
- Move seamlessly between Windows Explorer and your browser.
- Workflow documents from Windows Explorer.
- Check in/out documents.
- Offline editing.
- Alter Dublin core data such as Description straight from Explorer.
- HTTP and HTTPS support.

Feature Comparison Chart

↓ Feature	Net Drive	Plone Desktop
→ Work with remote files in local applications such as Microsoft Office	✓	✓
→ Encrypted communications to protect private data	✓	✓
→ Drag n drop content locally to remote server	✓	✓
→ Ability to provide rich "content types" as file types		✓
→ Ability to workflow and/or assign metadata properties		✓
→ Ability to script how content is saved/retrieved		✓
→ 30 days of installation support		✓

Requirements

Operating system platform requirements

Microsoft Windows 2000
Microsoft Windows XP
Microsoft Windows 2003

System permission requirements

Administrative privileges are needed to be able to;

- Install and manage computer services.
- Write to the Windows registry.
- Install software on the file system.

Hardware requirements disk space

- 10 MB of hard drive space for the initial installation. 100MB or greater to allow for future cache growth recommended.
- 256 MB RAM (512 of RAM recommended).
- 750 GHz (or faster) CPU (1.25 GHz recommended).

Enfold Systems, Ilc

4500 montrose blvd suite d
houston, texas 77006 usa
t 713 942 2377
f 832 201 8856
info@enfoldsystems.com
www.enfoldsystems.com